



Macao Paradise

FROM -DESDE USD
USD 85,000 TH
USD 175,000 VILLAS
ENTREGAS-DELIVERY
PHASE/FASE 1 -ENE 2024
PHASE/FASE 2 -AGO 2024
PHASE/FASE 3 -DIC 2024
FINANCIABLE

.....a tan solo a 1 km de la playa

El Residencial Macao Paradise se ubica en la zona de Playa Macao, a escasos 3 minutos de la playa, en la provincia la Altagracia República Dominicana, el proyecto está compuesto por 13 villas de 120 m², 126 townhouses de 60 m² y dos áreas comunes de más de 2.000 m² en total.

El proyecto cuenta con los siguientes elementos según tipología y fase:

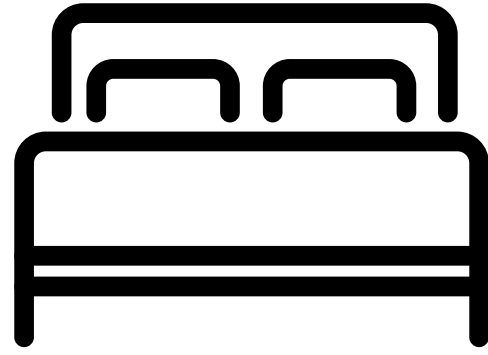
Macao Paradise Residential is located in the area of Playa Macao, just 3 minutes from the beach, in the province of Altagracia, Dominican Republic. The project consists of 13 villas of 120 m², 126 townhouses of 60 m² and two common areas of more than 2,000 m² in total. The project has the following elements according to typology and phase:

	Fase 1	Fase 2	Fase 3	Total
Viviendas				
Villas	13	-	-	13
Townhouse	44	46	36	126
Zonas comunes residenciales				
	Phase 1	Phase 2	Phase 3	Total
Units				
Villas	13	-	-	13
Townhouse	44	46	36	126
Residential Common Areas				

VILLAS



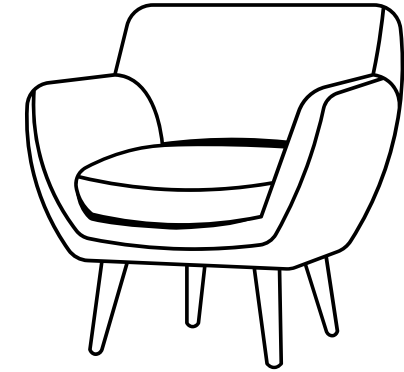




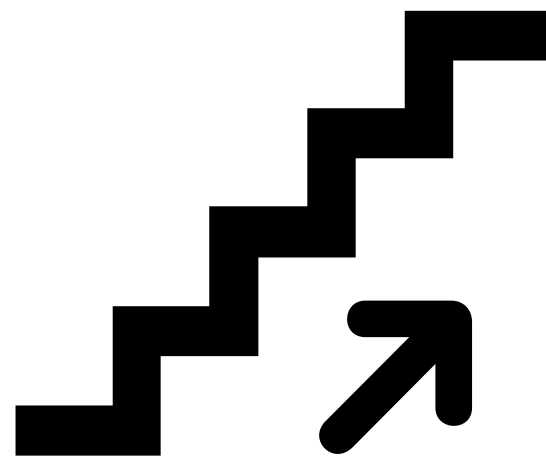
2



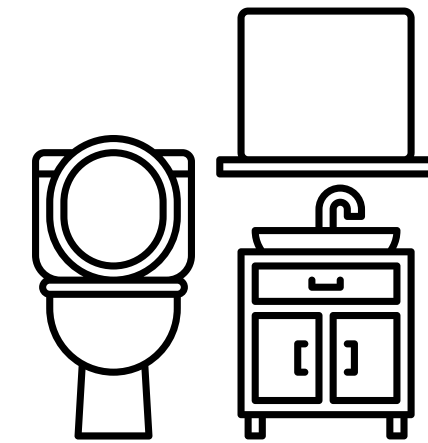
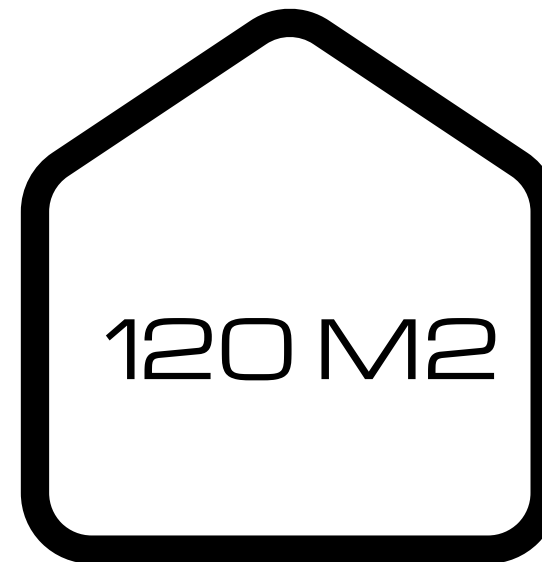
2



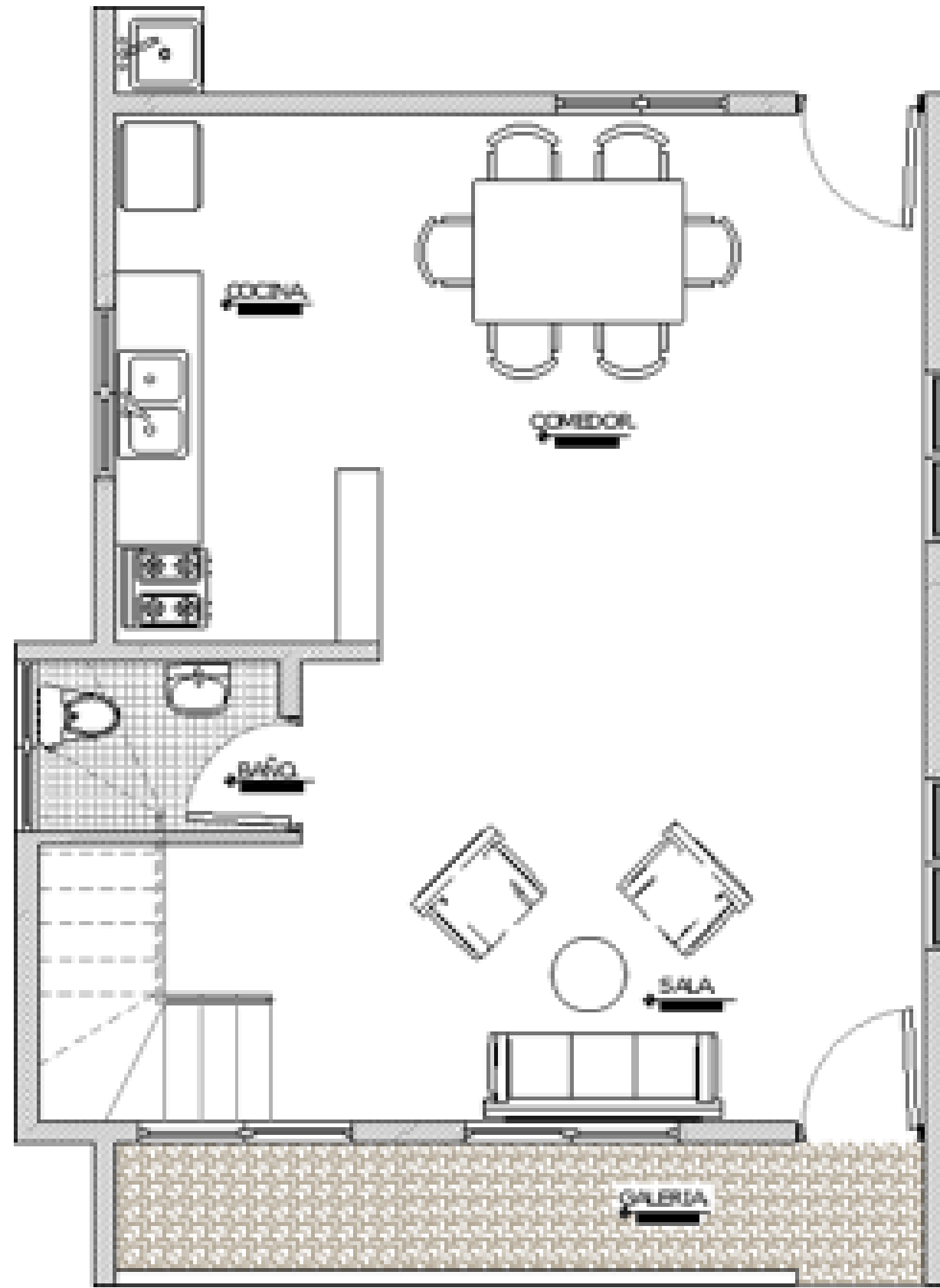
FAMILY ROOM



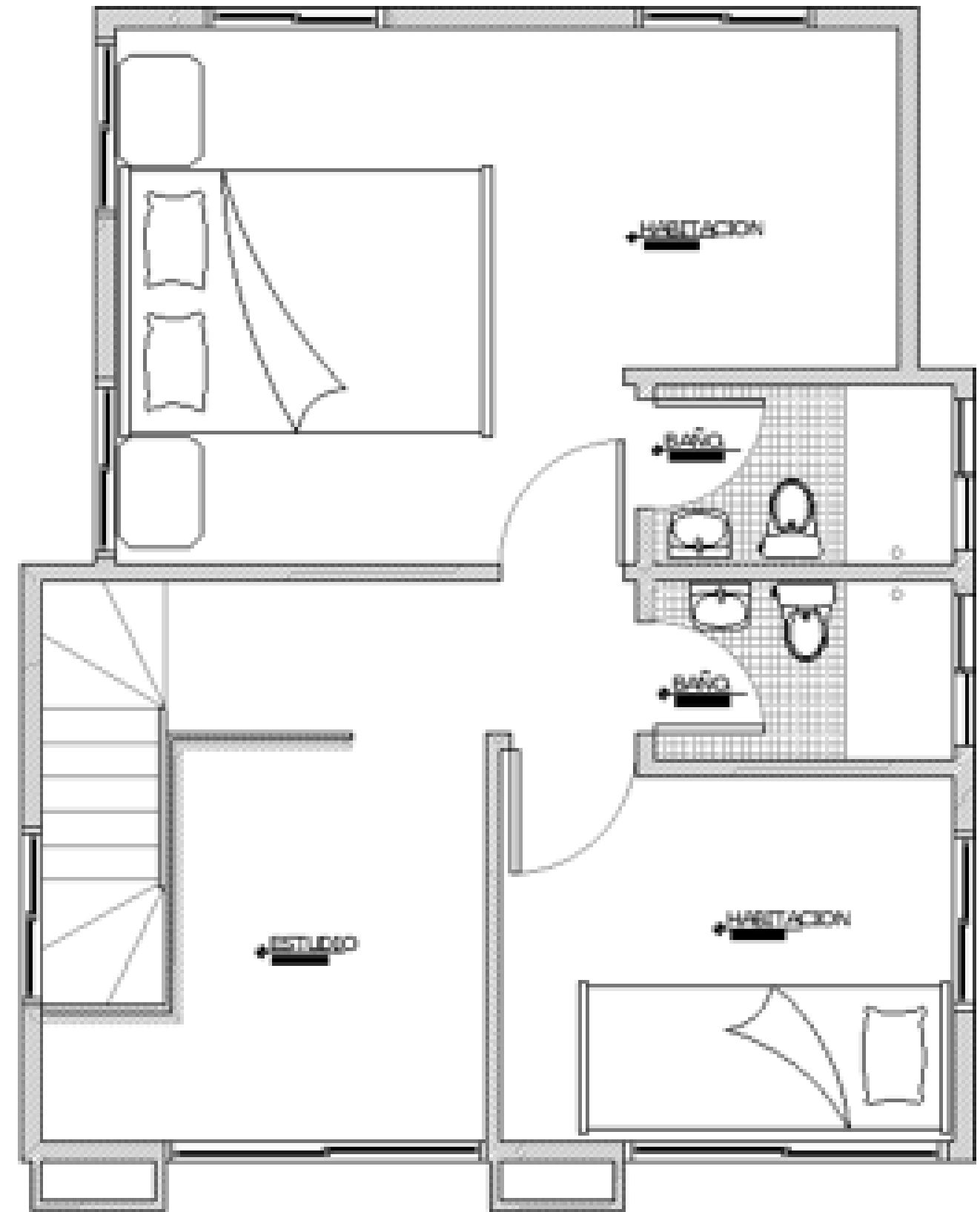
2 NIVELES / 2 LEVELS



1,5



NIVEL 1 -LEVEL 1



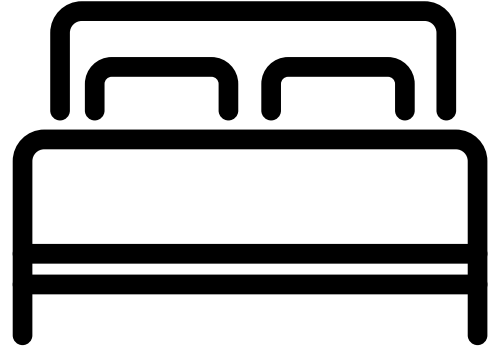
NIVEL 2 -LEVEL 2





TOWNHOUSES

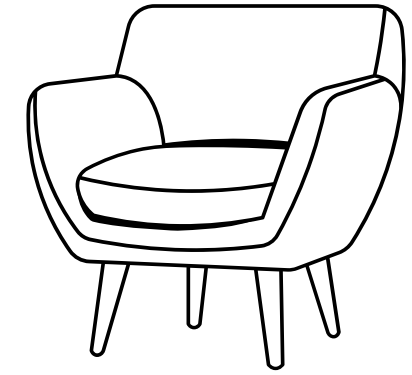




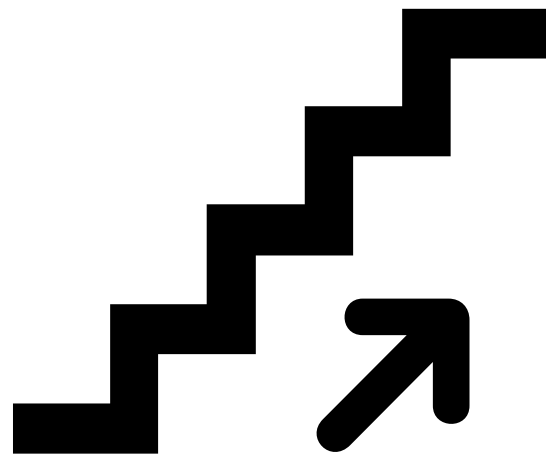
1



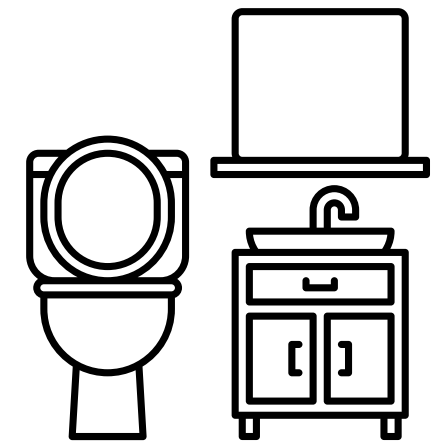
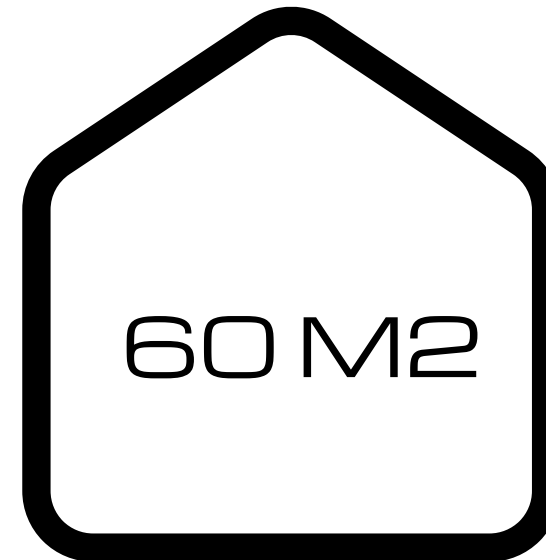
1



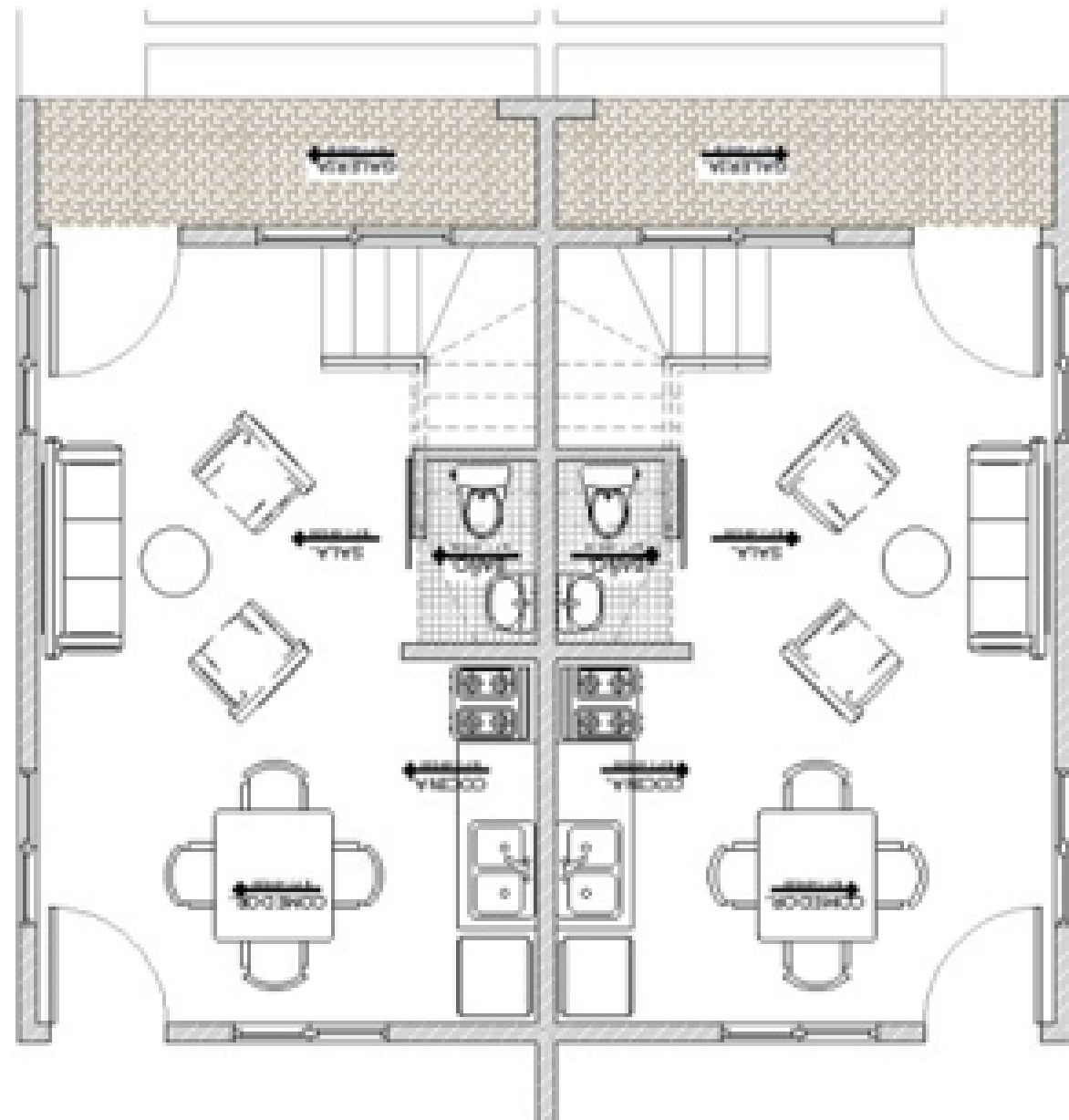
FAMILY ROOM



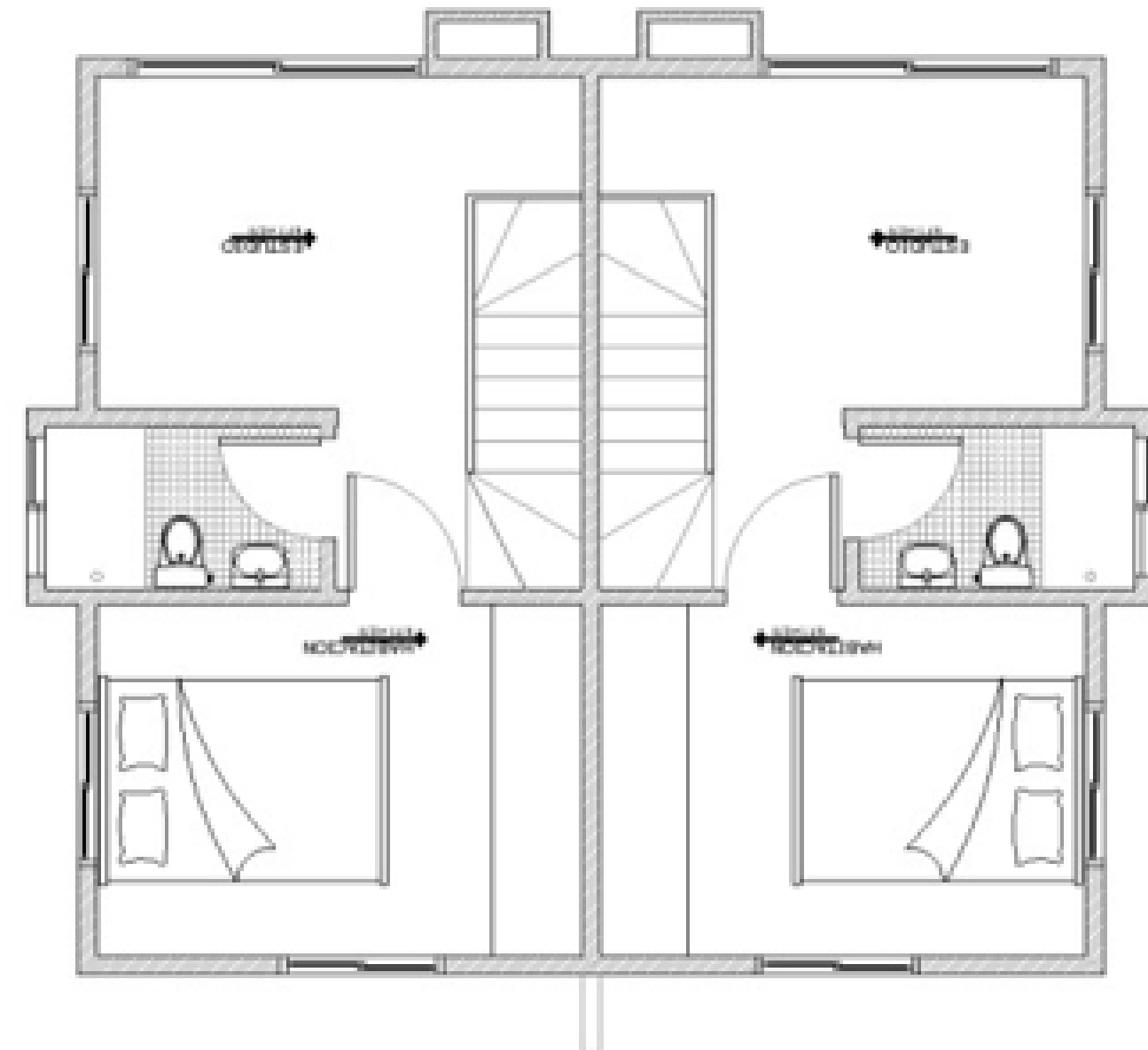
2 NIVELES / 2 LEVELS



1



NIVEL 1 -LEVEL 1



NIVEL 2 -LEVEL 2

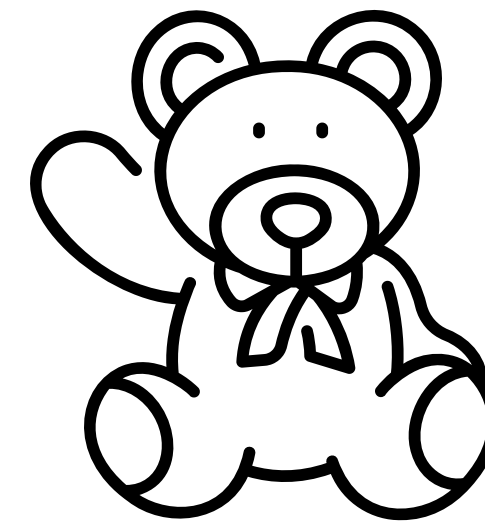
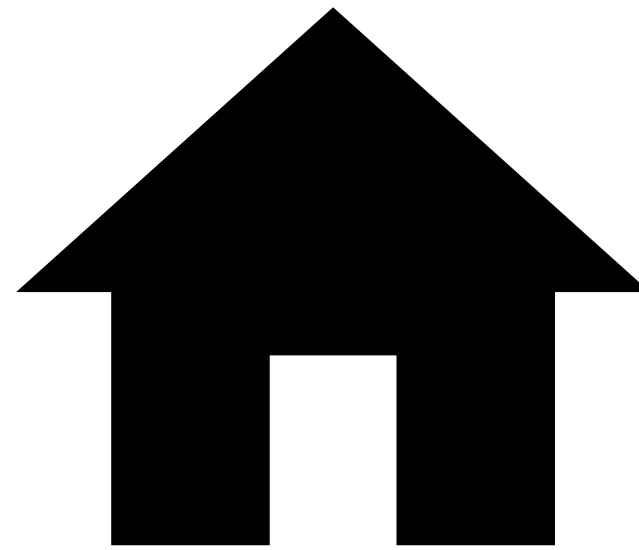
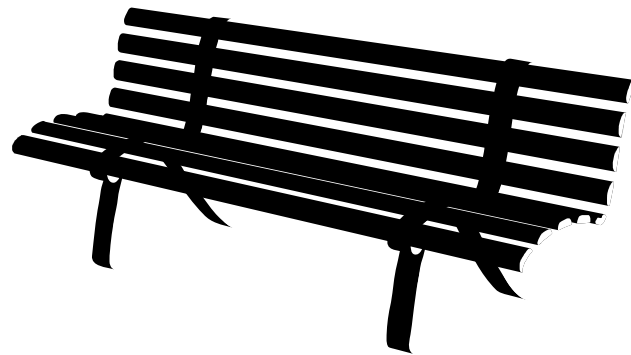
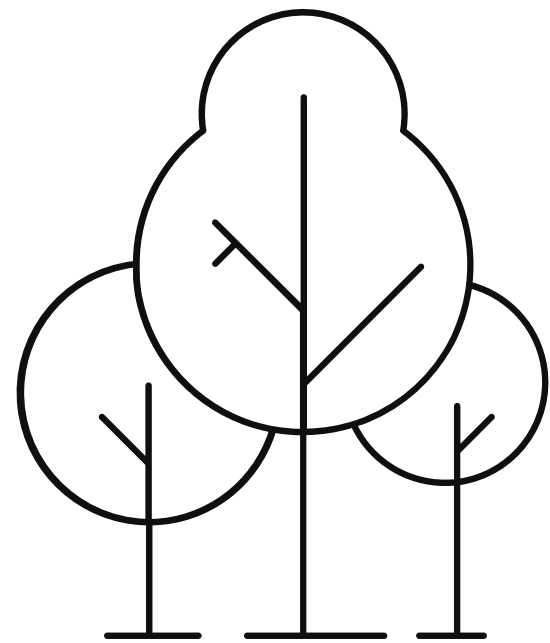
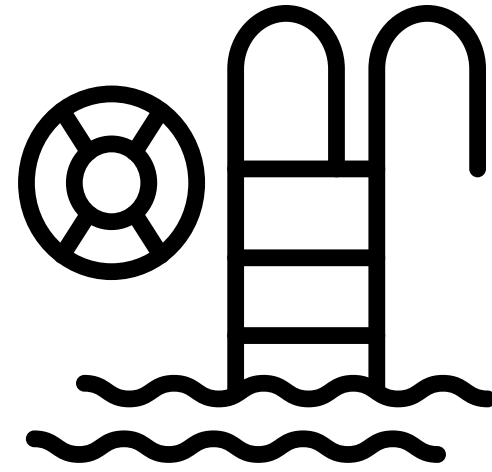
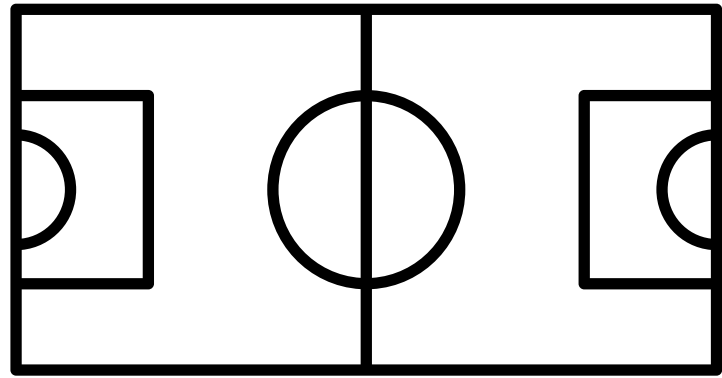


An aerial view of a modern residential complex. The complex features long, multi-story apartment buildings with a clean, minimalist design. In the center, there is a large outdoor basketball court with a blue and green court surface and yellow markings. To the right of the basketball court is a children's playground with colorful equipment. The area is landscaped with numerous palm trees and other tropical plants. A paved walkway runs alongside the buildings, and a few cars are parked or driving on the roads. The overall atmosphere is bright and modern.

AMENIDADES

AMENITIES





KIDS ZONE





SERVICIOS Y BENEFICIOS-SERVICES AND BENEFITS

Cada edificación cuenta con servicios públicos domiciliarios de electricidad, agua y alcantarillado. La electricidad contará con servicios propios en cada apartamento o casa y un servicio común para las zonas comunes. El agua y el alcantarillado es un solo servicio común para las viviendas y áreas comunes.

Dentro de las instalaciones generales del proyecto se cuenta con lo siguiente:

Medidores independientes por cada departamento para el suministro eléctrico

Each building has public utilities for electricity, water and sewage. Electricity will have its own services in each apartment or house and a common service for common areas. Water and sewerage is a single common service for the homes and common areas.

The project's general facilities include the following:

Independent meters for each apartment for the electrical supply.

La apertura de la puerta principal tanto vehicular como peatonal será controlada únicamente por la garita de seguridad del complejo.

Red de telefonía con puntos en dormitorio principal y sala.

Red de TV cable con puntos en sala y dormitorios.

Sistema de tratamiento de aguas fecales comunitarios

Sistemas de tratamiento de agua de red, con sistema de filtración y ablandamiento.

Áreas verdes y Parque

Palapas

Piscina comunitaria.

Cancha deportiva

Circulación Vehicular y Peatonal pavimentada

The opening of the main vehicular and pedestrian doors will be controlled only by the complex's security checkpoint.

Telephone network with points in the master bedroom and living room.

Cable TV network with points in the living room and bedrooms.

Community sewage treatment system

Mains water treatment systems, with filtration and softening system.

Green areas and park

Palapas

Community swimming pool.

Sports court

Paved vehicular and pedestrian circulation.

PLAN DE PAGO

- ✓ RESERVACION US\$3000 TH -USD 5000 VILLAS
- ✓ EN 15 DIAS -15% CON LA FIRMA DEL CONTRATO
- ✓ 40 % DURANTE LA CONSTRUCCION EN 12 CUOTAS
- ✓ 45% CONTRA ENTREGA DE LA PROPIEDAD - FINANCIAMIENTO DISPONIBLE

PAYMENT PLAN

- ✓ RESERVATION US\$ USD 3,000 FOR TH- USD FOR VILLA
- ✓ NEXT 15 DAYS -15% WITH THE SING OF THE CONTRACT
- ✓ 40 % DURING THE CONSTRUCTION IN 12 QUOTAS
- ✓ 45% UPON DELIVERY OF PROPERTY- AVAILABLE FINANCING



